

# 145 JEFFERSON ST. SUITE 700A

SAN FRANCISCO, CALIFORNIA

[www.145-Jefferson.com](http://www.145-Jefferson.com)



## CARLOS SERRANO-QUAN

Listing Agent  
CA Lic. #01707584  
(415) 608-8409  
[carlos@sq-re.com](mailto:carlos@sq-re.com)  
[www.sq-re.com/carlos](http://www.sq-re.com/carlos)



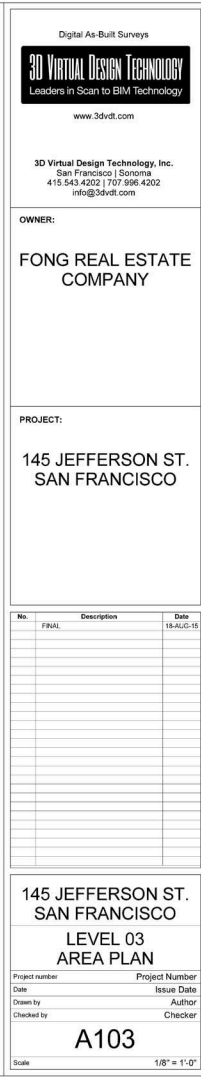
SEQUOIA  
COMMERCIAL GROUP



## ASHLEY SONG

Listing Agent  
CA Lic. #01914909  
(415) 572-6376  
[ashley@sq-re.com](mailto:ashley@sq-re.com)  
[www.sq-re.com/ashley](http://www.sq-re.com/ashley)

145 JEFFERSON STREET | SAN FRANCISCO | CA

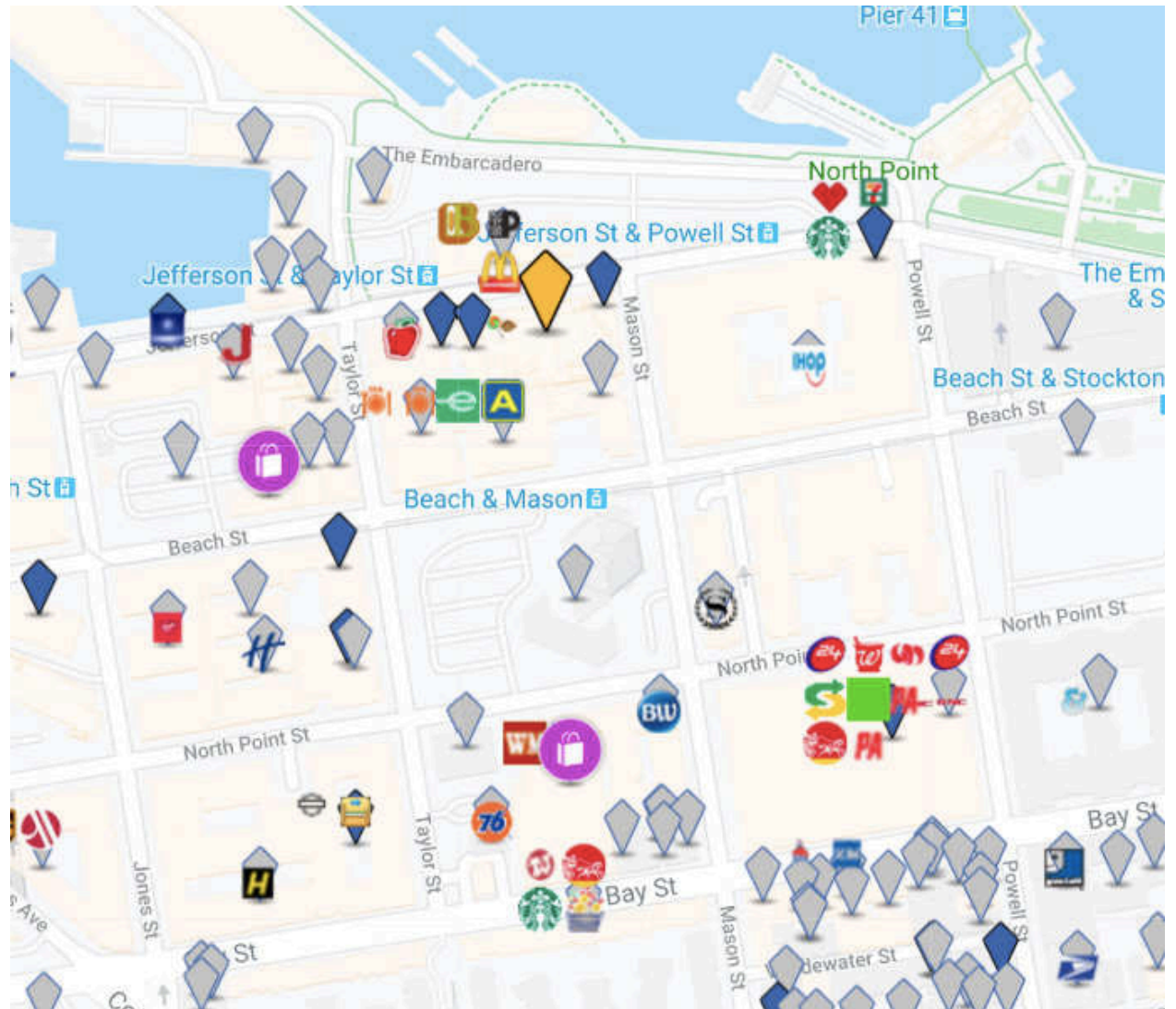




# WHAT'S CLOSE BY

145 JEFFERSON STREET | SAN FRANCISCO | CA

<b>Restaurants:</b>		
Taquerias El Faroilito		.01mi
<b>Coffee:</b>		
Darren's Cafe		.05mi
<b>Groceries:</b>		
Wharf Liquors & Deli		.03mi
<b>Parks:</b>		
North Beach Playground		.4mi
<b>Bars:</b>		
Gold Dust Lounge		.04mi
<b>Shopping:</b>		
Wharf Specialties		.03mi
<b>Entertainment:</b>		
Wax Museum Entertainment		.06mi



# PHOTOS

145 JEFFERSON STREET | SAN FRANCISCO | CA



# HIGHLIGHTS

145 JEFFERSON STREET | SAN FRANCISCO | CA

- **Lease: \$12/SqFt/Year**
- Walk Score: 94
- Transit Score: 89
- 2,059 SqFt
- Located at Fisherman's Wharf
- Kitchen Space
- Close Access to Parking Garages & Meter Parking
- Near a variety of tourist attractions restaurants, and shopping

A fantastic opportunity to attract instant attention and enjoy highly coveted commercial space in prime Fisherman's Wharf. This excellent 2,059 SqFt space commercial space is located on the third floor and offers a versatile layout and a kitchen to suit your needs.

Incredibly convenient and commuter-friendly, 145 Jefferson Street 700A places you at the heart of San Francisco's most exciting neighborhood in addition to being just steps from the MUNI F-Market Train and a short distance from the Caltrain. Located in the same building as Madame Tussauds Wax Museum, the San Francisco Dungeon, McDonald's Restaurant, and the San Francisco Chocolate Store, this building is known to attract crowds year-round and presents a truly premier retail opportunity for tenants.



**SEQUOIA**  
COMMERCIAL GROUP

FOR MORE INFORMATION CONTACT:



CARLOS SERRANO-QUAN

PHONE: (415) 608-8409 | EMAIL: CARLOS@SQ-RE.COM

ASHLEY SONG

PHONE: (415) 572-6376 | EMAIL: ASHLEY@SQ-RE.COM